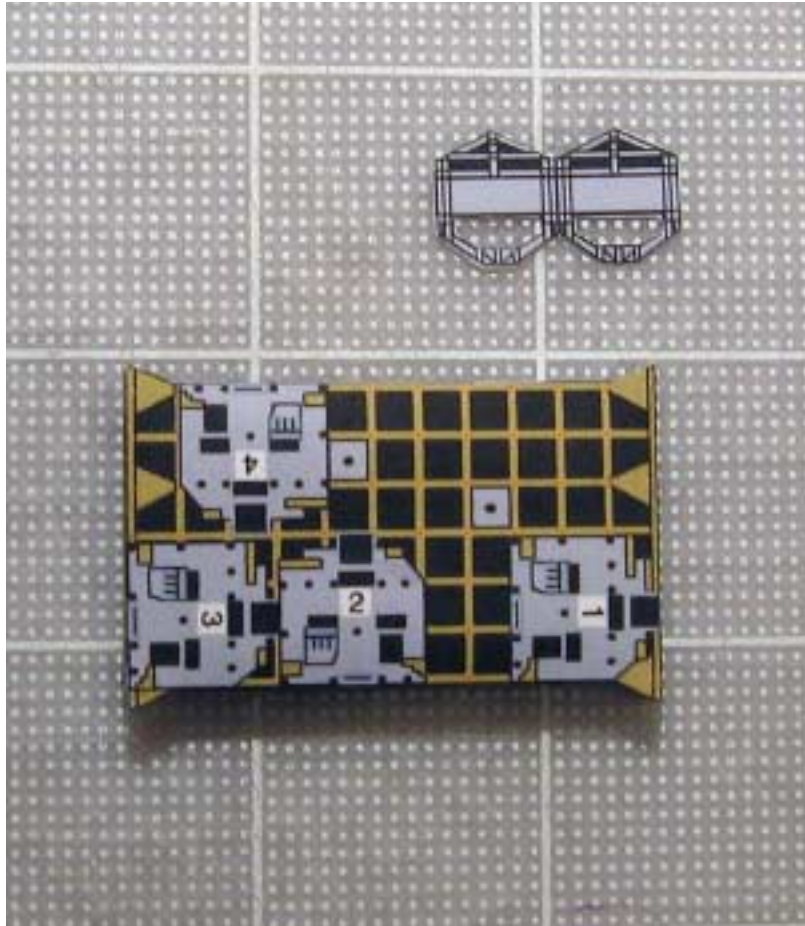
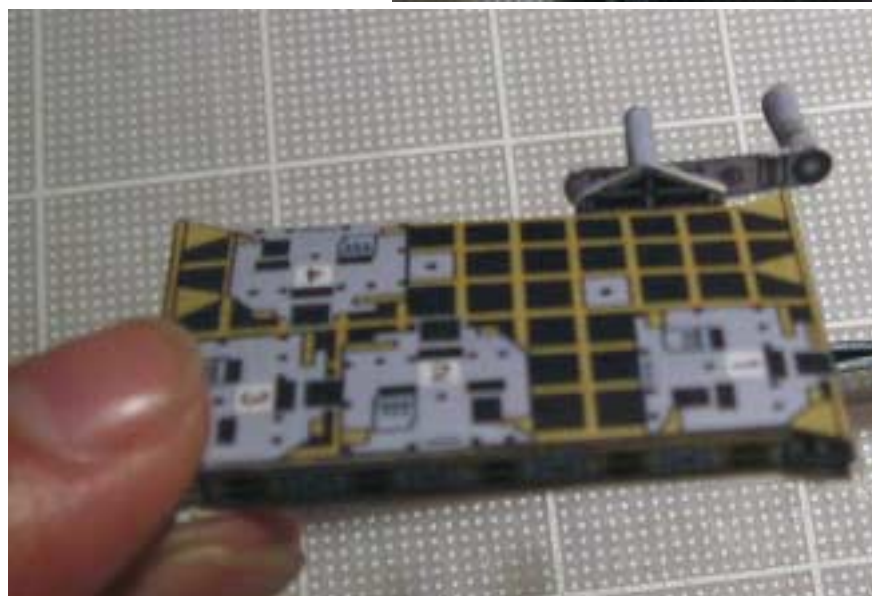
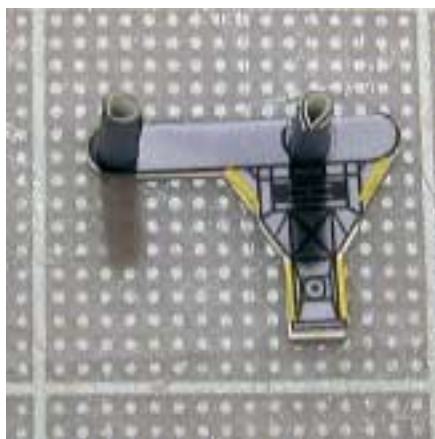


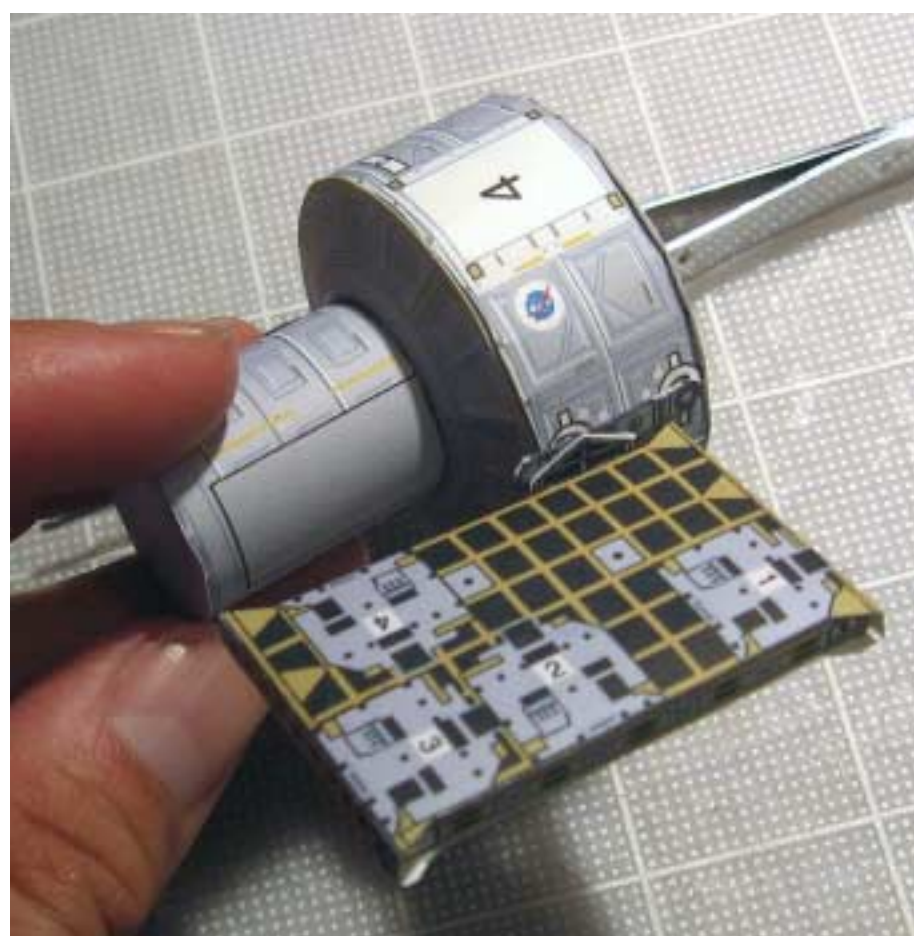
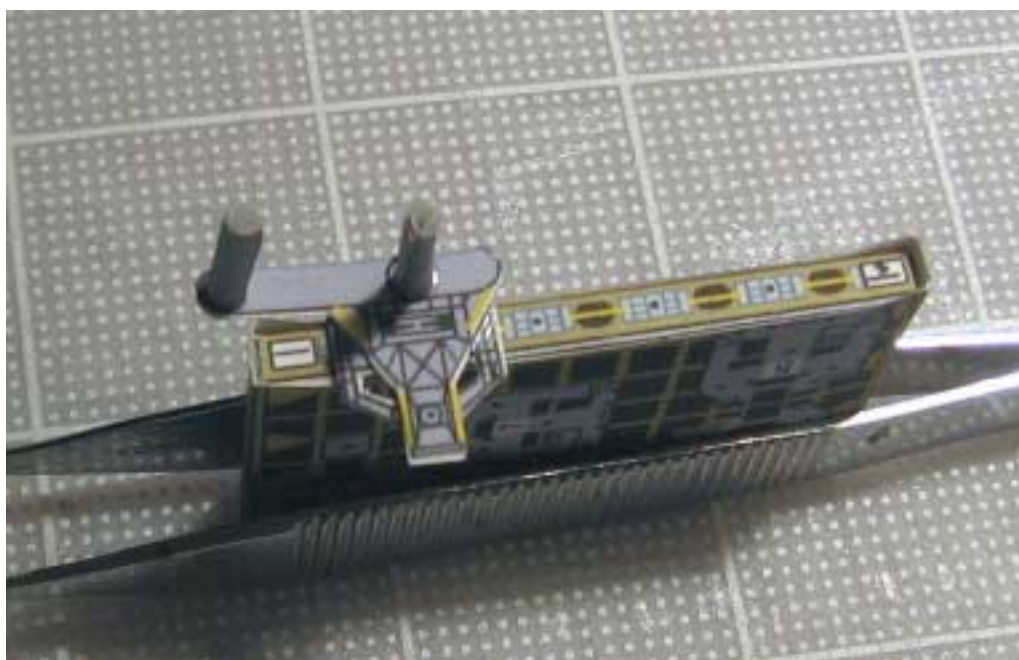
UPDATE for Space Station version model only
(Applies to both 1:144 and 1:100 scale models)

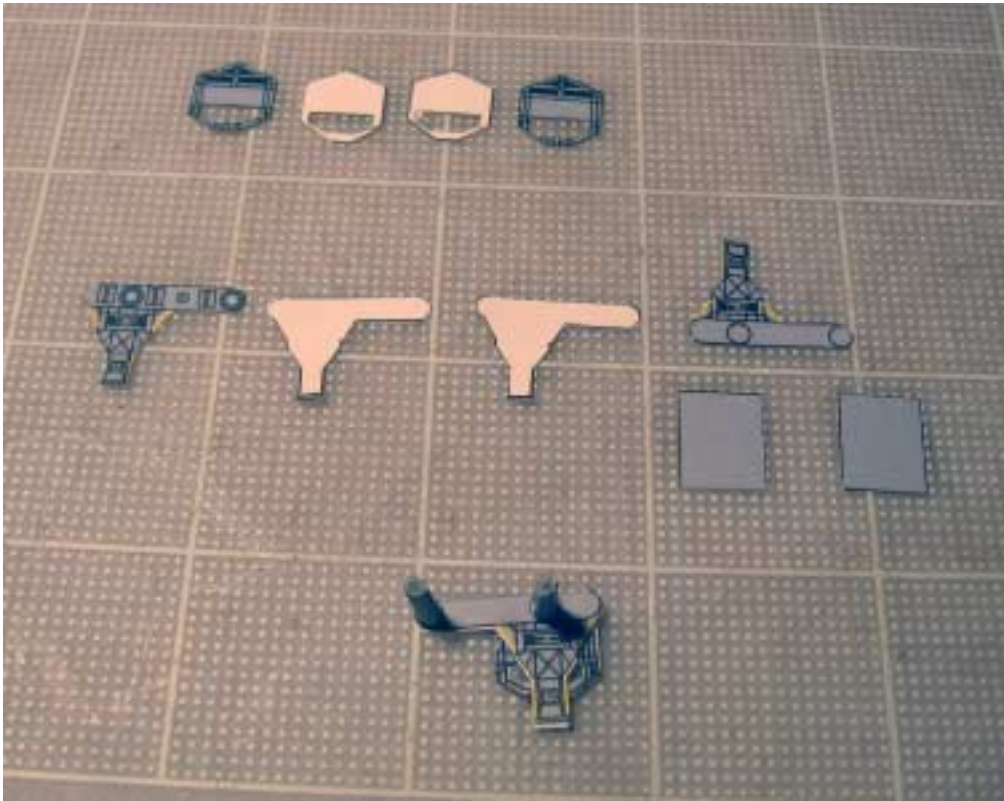


The ESP-2 file has been revised and new parts are replacing the old payload files for this mission. In order to not lose the detailed floor of the ESP-2 with its panels, the modeler now has the option to build separate ESP-2 platforms for all configurations to date. Note that the panels on both the top and bottom floors of the ESP-2 are numbered. This helps to indicate where the ORU's or elements are to be placed on the ESP-2.

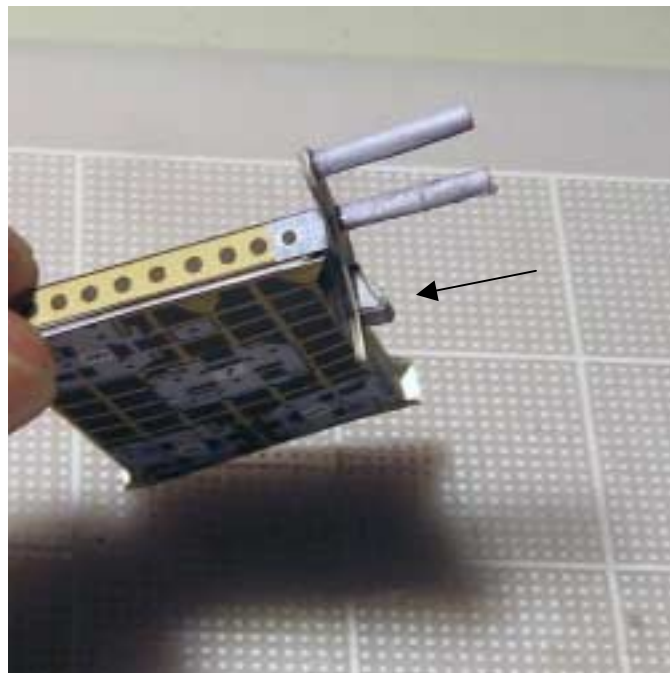
Photos on the next page indicate how the ESP-2 is connected to the "Quest" Airlock module.





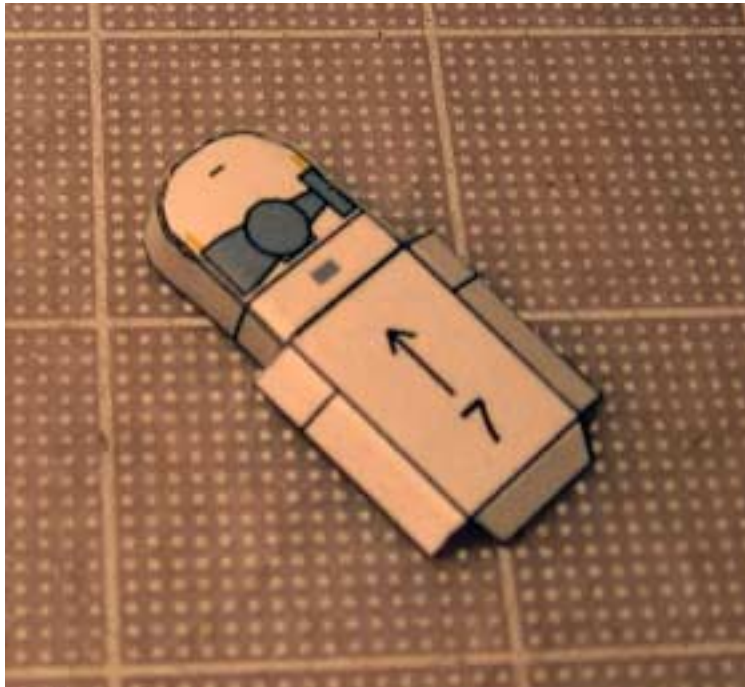


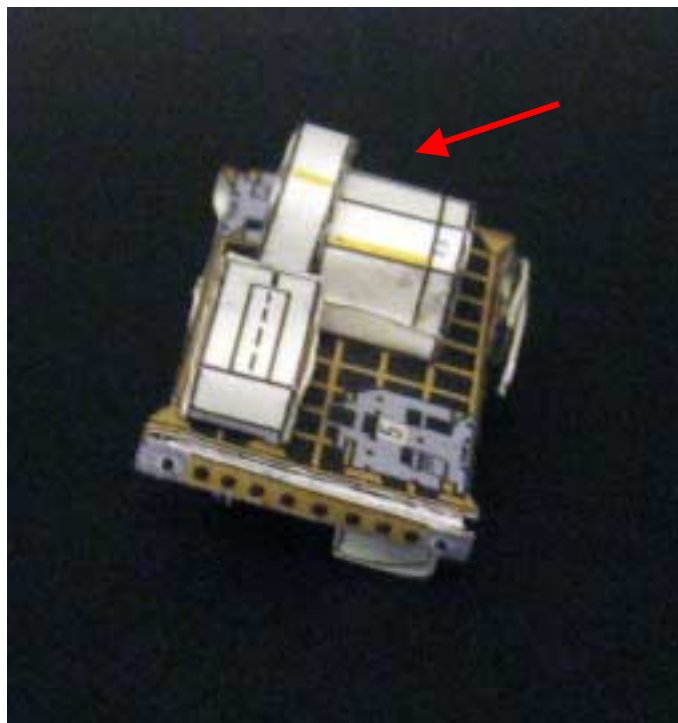
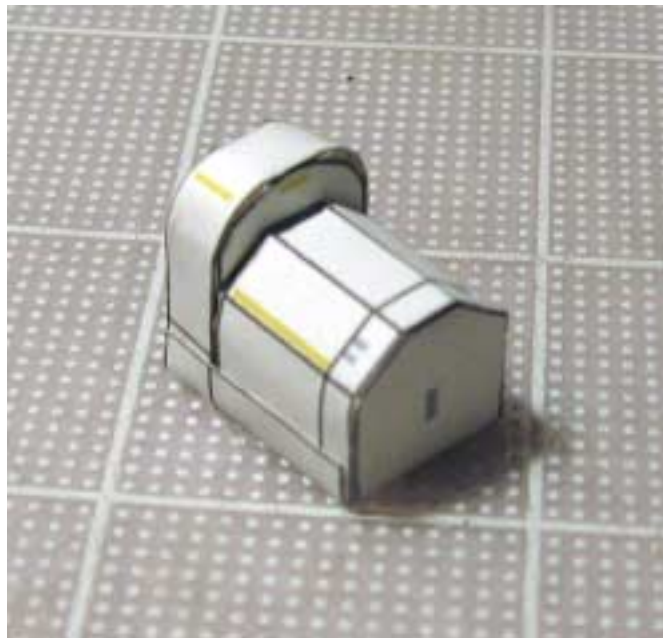
Parts for 1:100 model only



For 1:100 scale model only: a wedge has been added to keep the ESP-2 horizontal when connected to “Quest”. This wedge will prevent the platform from bending downward from the horizontal position.

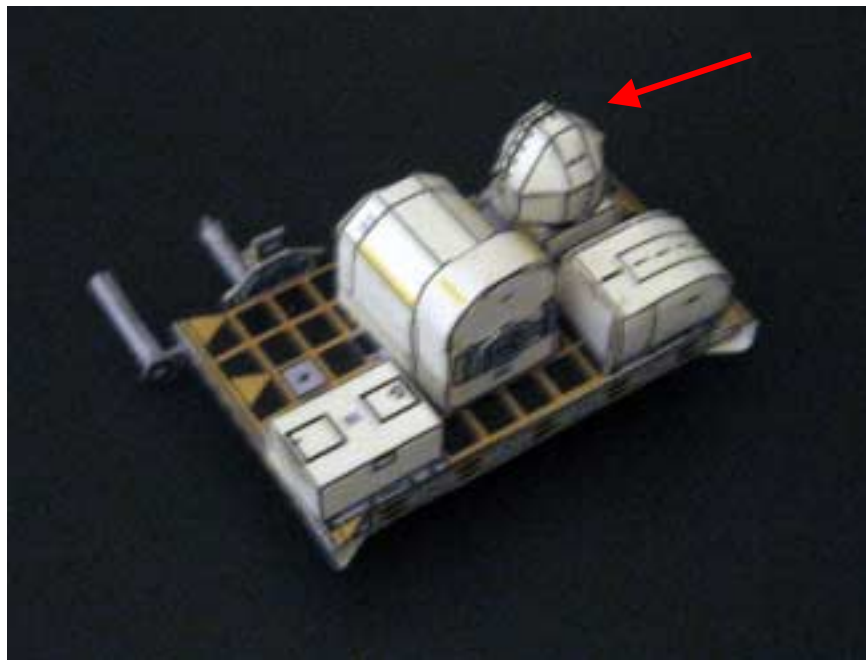
New design for the Flex Hose Rotary Coupler





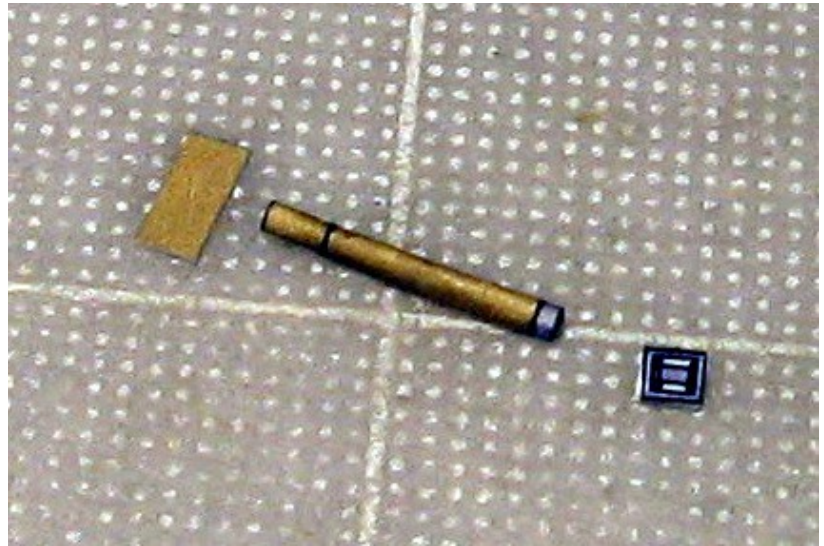


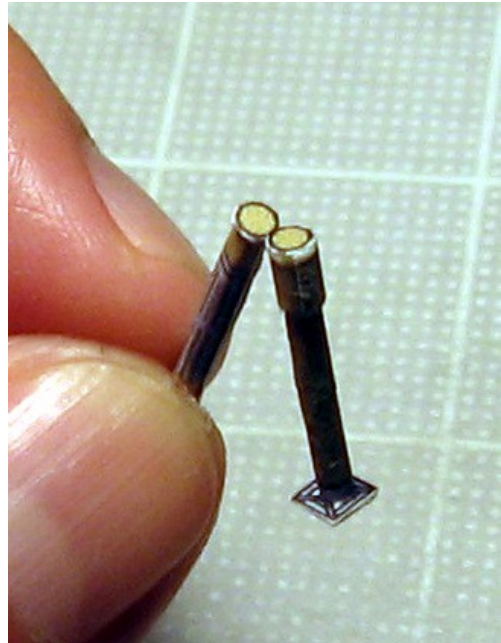
These parts will form the Gyroscope with its thermal cover used for ESP-2 configuration during STS-118 and STS-120 missions. This part will be released for STS-118 mission as well at a later date along with the complete ESP-3 elements for that mission.

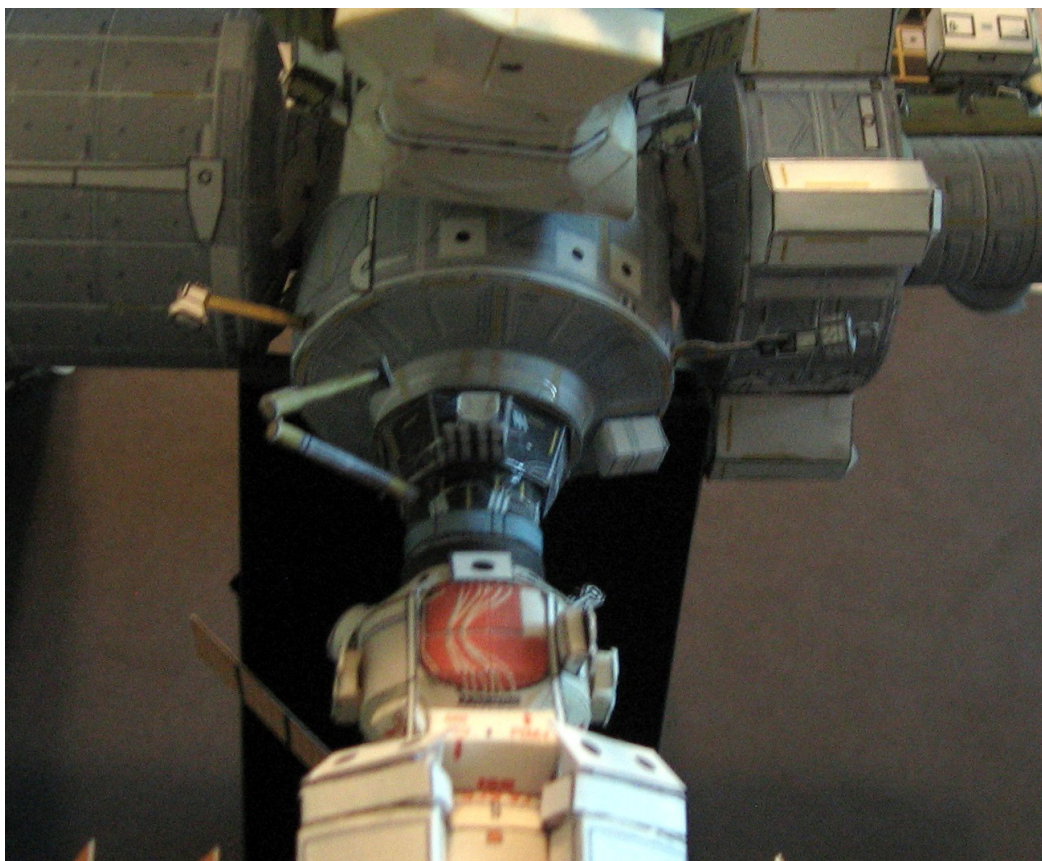


Enjoy this paper model!
<http://www.axmpaperspacescalemodels.com>

ORU Crane Assembly Manual







<http://www.axmpaperspacescalemodels.com>